

## **Faster, Better and Lower Cost Access to Authoritative Supplier and Manufacturer Data**

### **ABSTRACT**

---

For the last six years NATO AC 135 has been developing and testing ways to improve the speed and efficiency of the data collection methods used by its international codification bureaus. The result is two ISO standards and a new process called codification at source (C@S) that holds the promise of faster, better and lower cost access to authoritative data.

### **BIOGRAPHY**

---

#### **Peter R. Benson**

Executive Director  
Electronic Commerce Code Management Association

General Manager  
PiLog USA, Inc.



Mr. Peter R. Benson is a founding Director of the Electronic Commerce Code Management Association (ECCMA) where he currently holds the position of Executive Director.

Peter is an expert in distributed information systems, content encoding and master data management. He designed one of the very first commercial electronic mail software applications, WordStar Messenger and was granted a British patent in 1992, covering the use of electronic mail systems to maintain distributed databases.

Peter designed and oversaw the development of distributed database management systems used extensively in the U.K. and U.S. by the Public Relations, Media and Securities industries. From 1994 to 1998, Peter served as the elected chair of ANSI ASC X12E, the standards committee is responsible for the development and maintenance of EDI standards for product data.

Peter is responsible for the design and development of the UNSPSC, an internationally recognized spend analysis classification. Peter also designed the eOTD, an internationally recognized open concept dictionary based on the NATO codification system. Peter is a member of ISO TC 184 SC 4 where he is the project leader for ISO 22745 (open technical dictionaries) and ISO 8000 (data quality).

Peter consults on data quality, data governance and the strategic implementation of data quality solutions. In July 2009, Peter joined PiLog as the General Manager for PiLog USA, Inc.



International Association of  
ISO 8000 Data Quality Managers

## Creating and Managing an ISO 8000 Data Supply Chain

Peter R. Benson

*All software applications run better  
on ISO 8000 quality data!*

Slide 1

**Data is the DNA**

Data is the DNA of materiel management

- Design
- Acquisition
- Financial management
- Hazardous material
- Freight and packaging
- Maintenance
- Sustainability
- Disposal
- Demilitarization

Logistics Information

ITEMS SUPPLIERS CUSTOMERS CATALOGING

INTEGRITY INTEGRATION INTEROPERABILITY DATA

INDUSTRY WARFIGHTING FORCES

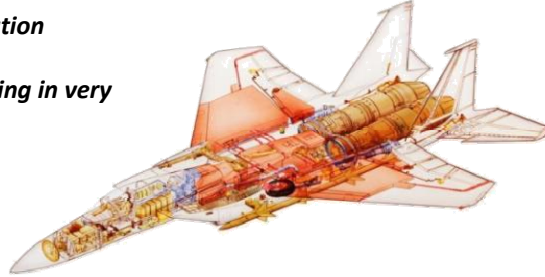
Development In-Storage In-Transit In-Theater Disposal

NSN UID RFID

Slide 2

## Motivation for ISO 22745 and ISO 8000

*“From a logistics information perspective... an F-15 is just 171,000 parts flying in very close formation.”*



**Cataloging and Standardization Act, Public Law 82-436 as codified by United States Code, Title 10, Chapter 145 – Cataloging and Standardization Sec. 2451.**

*(a) The Secretary of Defense shall develop a single catalog system and related program of standardizing supplies for the Department of Defense.*

*(b) In cataloging, the Secretary shall name, describe, classify, and number each item recurrently used, bought, stocked, or distributed by the Department of Defense, so that only one distinctive combination of letters or numerals, or both, identifies the same item throughout the Department of Defense. Only one identification may be used for each item for all supply functions from purchase to final disposal in the field or other area.*

Slide 3

## Motivation for ISO 22745 and ISO 8000



Controlling costs requires better asset, product, component and process visibility. This is achieved through faster, better and lower cost access to authoritative characteristic data.

Slide 4

## Motivation for ISO 22745 and ISO 8000

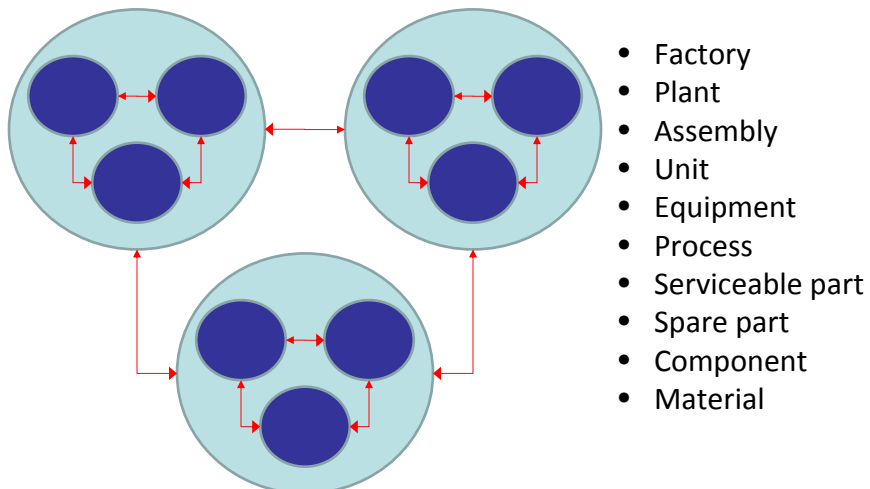


Controlling costs requires better asset, product, component and process visibility. This is achieved through faster, better and lower cost access to authoritative characteristic data.

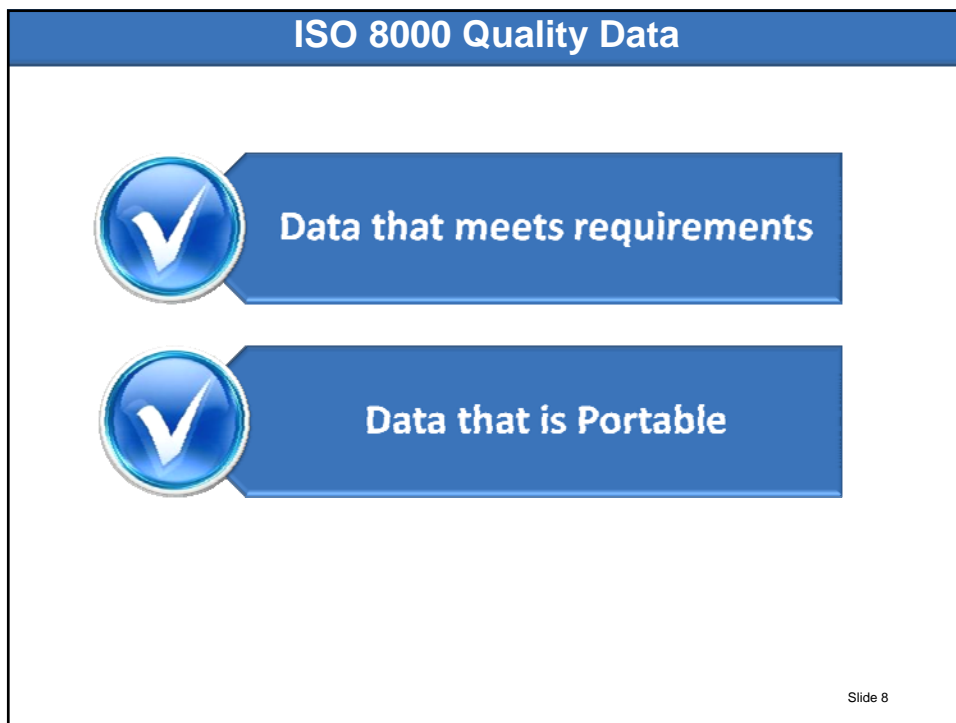
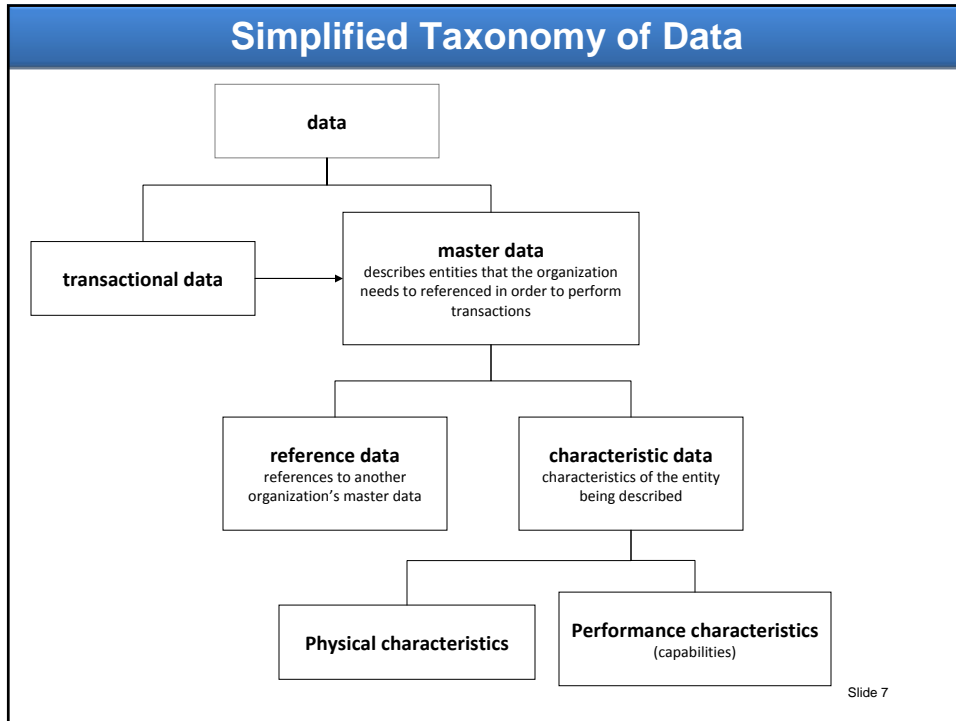
Slide 5

## Integrating Systems of Systems of Systems.....

The ability to integrate disparate systems is dependent on the quality of the data that identifies and describes the systems.



Slide 6



## Operating Systems are the Antidote to Hardware “Lock-in”

An operating system is the infrastructure software component of a computer system responsible for sharing the limited resources of the computer. The operating system acts as a host for applications that are run on the machine.

**1969 - UNIX** (we also landed on the moon!)  
 1974 - CP/M  
 1981 - MSDOS  
 1985 - Windows 1.0  
 1991 - Linux  
 1995 - BOB  
 2000 - ME  
 2001 - XP  
 2004 - Ubuntu  
 2007 - VISTA  
 2009 - Windows 7  
 2009 - **Android**

Slide 9

## ISO Data Standards are the Antidote to Application “Lock-in”

**ISO 22745**

**ISO 8000 Portable data**

Quality data is portable data; it is independent of the software application and accessible by any application

Slide 10



## The Need for Data that Meets Requirements

**Quality data is data that meets requirements**  
nothing more – nothing less!

**It is all about the requirements**

a data requirement is a specification of the data elements needed to support a specific business function

Slide 11

## What does a data requirement look like?

**The buyer, item manager or user as the data requestor defines their requirements for data:**

*What is the item name and what characteristic data do I need?*

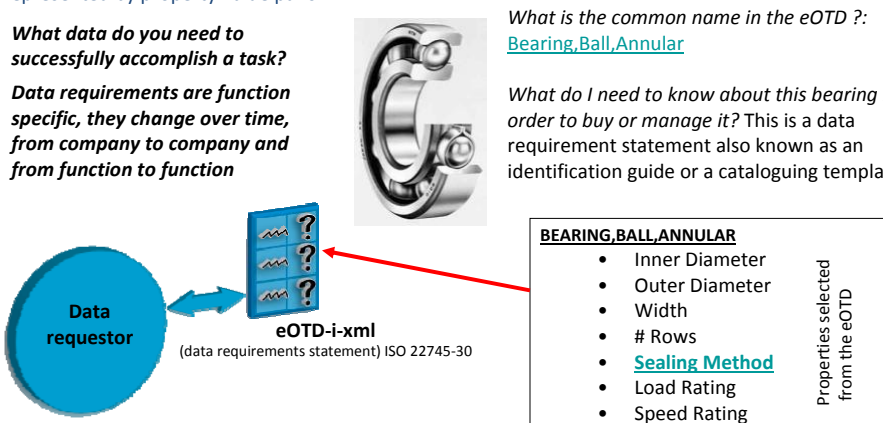
A data requirement statement is created as an eOTD-i-xml identification guide, an XML file that conforms to ISO 22745 part 30 in which the item name is the class and the characteristic data is represented by property-value pairs

**What data do you need to successfully accomplish a task?**

*Data requirements are function specific, they change over time, from company to company and from function to function*

*What is the common name in the eOTD?:*  
[Bearing,Ball,Annular](#)

*What do I need to know about this bearing in order to buy or manage it? This is a data requirement statement also known as an identification guide or a cataloguing template.*




**BEARING,BALL,ANNULAR**

- Inner Diameter
- Outer Diameter
- Width
- # Rows
- [Sealing Method](#)
- Load Rating
- Speed Rating

Properties selected from the eOTD

Slide 12

A Form is a Specification of a Data Requirement



**MOSCOW ART SUMMER ACADEMY 2007  
APPLICATION FORM**

Attaching a résumé is not a substitute for completing this form in full. Please type or print clearly.

**PROGRAM. Please check the program, class and session you are applying to.**

<b>Stanislavsky Summer School</b> 6 weeks (students) or professionals July 2 - August 12, 2007 <input type="checkbox"/> Acting Class	<b>Tchaikovsky Summer School</b> 3 weeks (Cello and Violin programs) July 31 - August 19, 2007 <input type="checkbox"/> Violin <input type="checkbox"/> Cello <input type="checkbox"/> Strings Competition
---	---

**CONTACT AND PERSONAL INFORMATION. Please type or write legibly.**

Name: \_\_\_\_\_  Female  Male

Current Address: \_\_\_\_\_

Current Phone: \_\_\_\_\_

E-mail: \_\_\_\_\_

Permanent Address: \_\_\_\_\_

Permanent Phone: \_\_\_\_\_

Date of Birth: \_\_\_\_\_ Age (as of 7/1/07): \_\_\_\_\_ Social Security No.: \_\_\_\_\_

Country of Citizenship: \_\_\_\_\_ Visa Status (if not U.S. citizen): \_\_\_\_\_

What is your hometown? (city, state and country, if not U.S.): \_\_\_\_\_

**APPLICATION FEE**

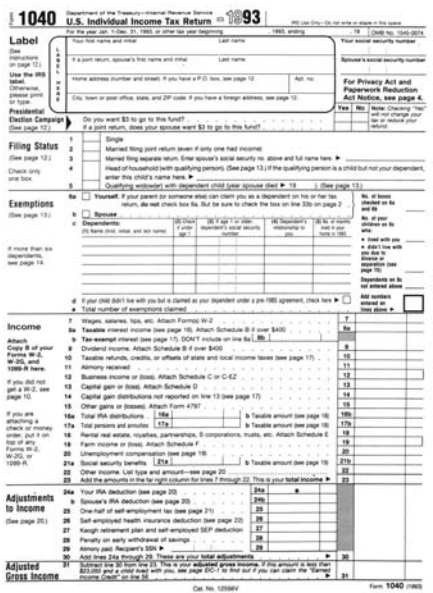
The \$50.00 Application Fee is required of all applicants. This fee is not refundable and cannot be credited against any other charges. Checks and money orders must be drawn on US banks in US funds and made payable to: **MOSCOW ART THEATRE SCHOOL USA**. Please send your application package to: **MOSCOW ART THEATRE SCHOOL USA, 1216 DENNISTON STREET, PITTSBURGH, PA 15217**

Enclosed is the check/money order number \_\_\_\_\_ payable to the Moscow Art Theatre School USA.

Date: \_\_\_\_\_ Signature: \_\_\_\_\_

If you are under 18 years old, this form should be countersigned by your parent or guardian:  
 Name: \_\_\_\_\_ Relationship to applicant: \_\_\_\_\_ Signature: \_\_\_\_\_

Over - application form continues on reverse.



**1040 U.S. Individual Income Tax Return 2009**

Department of the Treasury Internal Revenue Service

**Label** (See instructions on page 12.)

Use the 990 label (otherwise, please print or type)

**Presidential Election Campaign** (See page 12.)

**Filing Status** (See page 12.)

**Exemptions** (See page 13.)

**Income** (See page 15.)

**Adjustments to Income** (See page 20.)

**Adjusted Gross Income**

The Quality of the Data Requirement determines the quality of the data

Axioms

You get what you ask for

The quality of your request for data will determine the quality of the reply you receive.

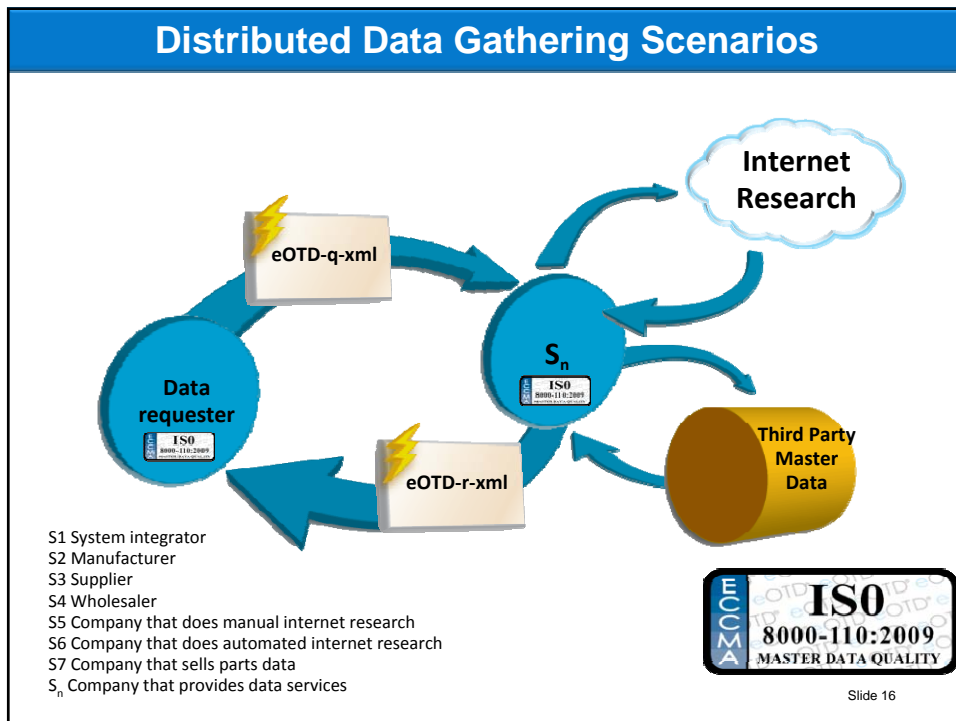
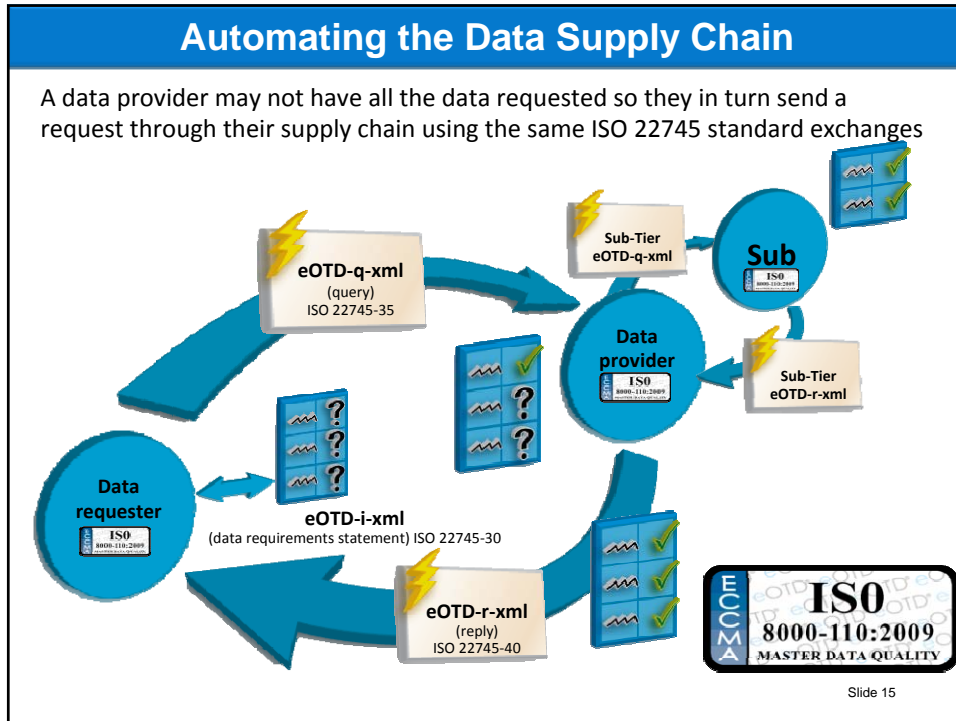
It is better to ask than to take

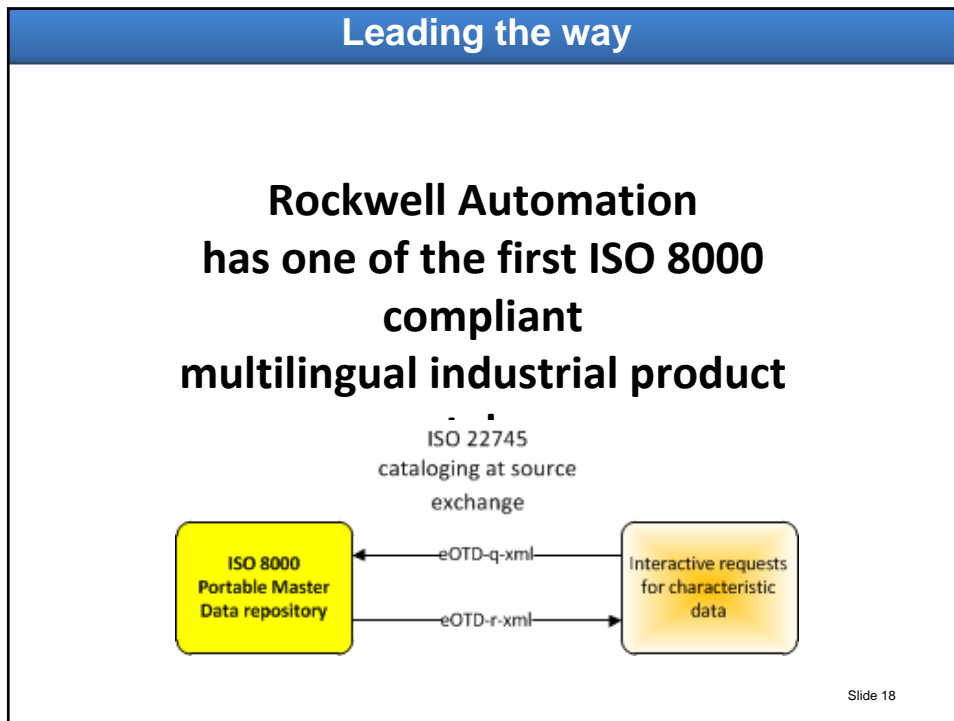
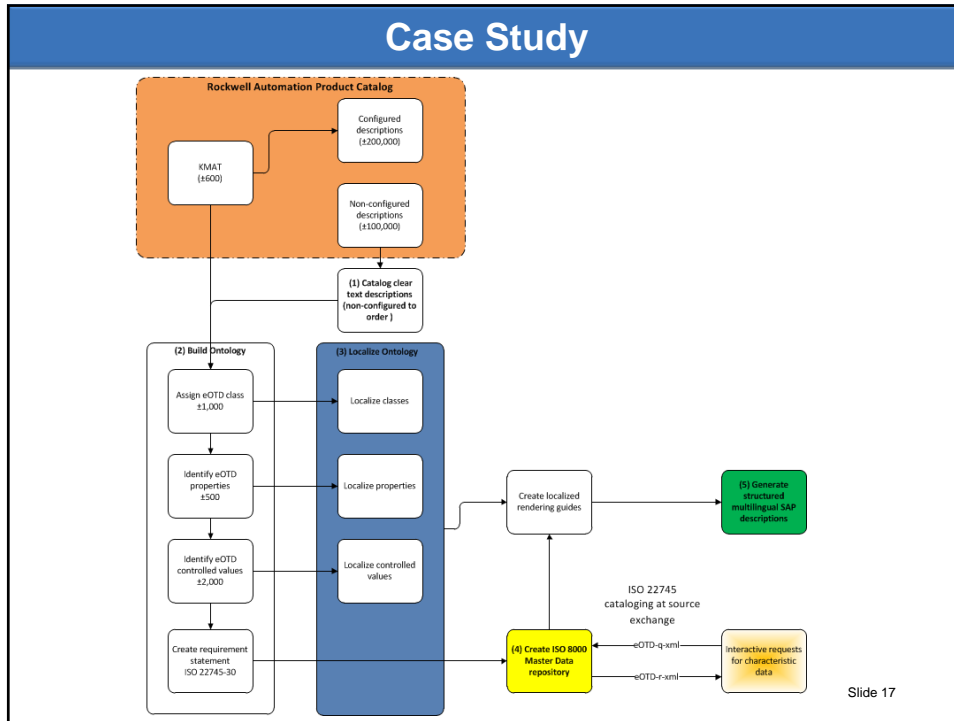
Great care should be used in mining web data. Using a robot to mine data available on public servers can be unreliable, unethical or illegal.

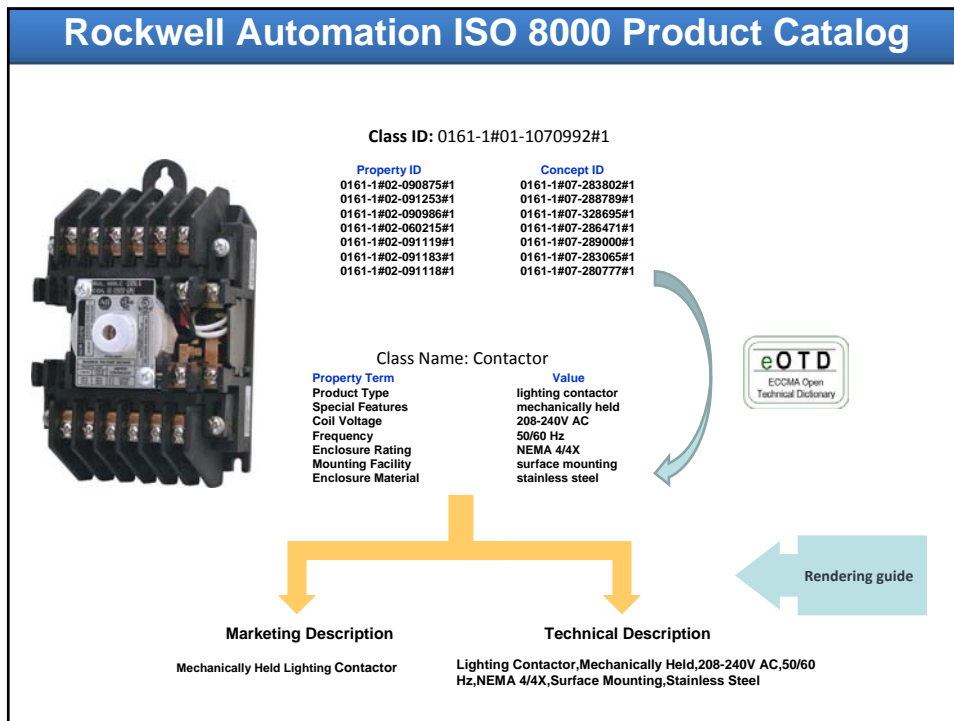
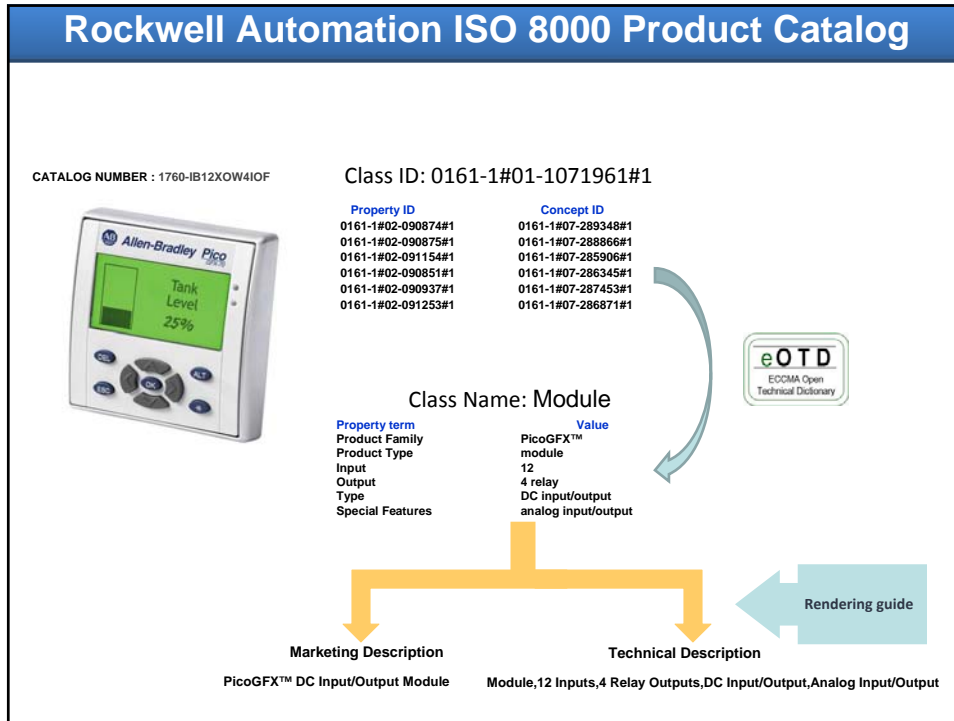
(if you are contracting with a third party to collect data for you, at a minimum your contract should require that they respect the Robots exclusion standard)

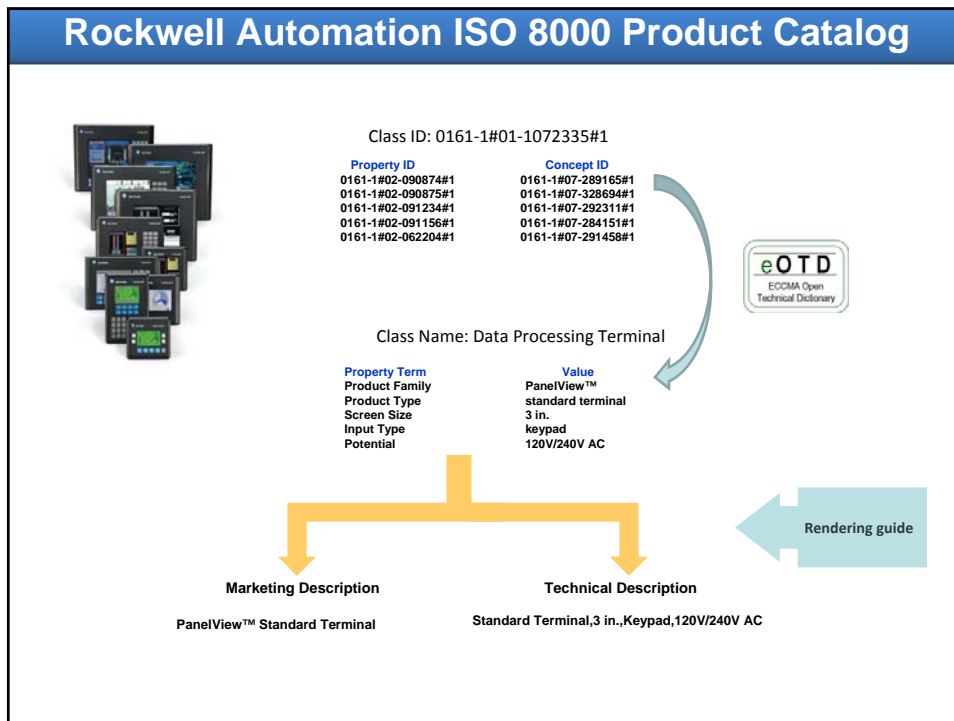
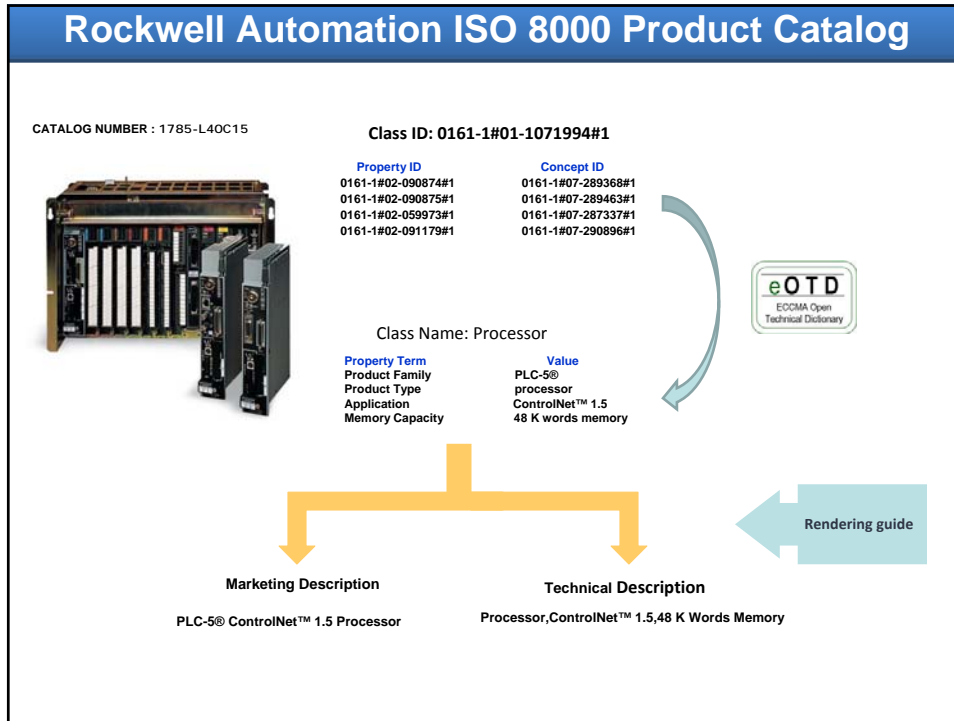
Slide 14











Faster, better and lower cost access to authoritative data



*Easier to find  
Easier to integrate  
Easier to order*